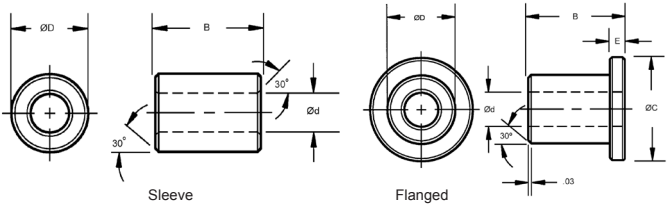


THERMOPLASTIC BEARINGS

BORE SIZE	SHAFT SIZE	TYPE
1/8" TO 1/2"	.1250 TO .5000	SLEEVE AND FLANGED



SLEEVE STOCK NO.	FLANGED STOCK NO.	NOMINAL SIZES Ød	ØD	B	ØC	E (+0./-0.055)	I.D. AFTER PRESS FIT		HOUSING BORE		SHAFT SIZE	
							MAX.	MIN.	MAX.	MIN.	MAX.	MIN.
B17-1	B18-1	1/8	3/16	3/16	.312	.032	.1269	.1251	.1878	.1873	.1243	.1236
B17-2	B18-2	1/8	3/16	1/4	.312	.032	.1269	.1251	.1878	.1873	.1243	.1236
B17-3	B18-3	1/8	3/16	3/8	.312	.032	.1269	.1251	.2503	.1873	.1243	.1236
B17-4	B18-4	3/16	1/4	1/4	.375	.032	.1892	.1873	.2503	.2497	.1865	.1858
B17-5	B18-5	3/16	1/4	3/8	.375	.032	.1892	.1873	.2503	.2497	.1865	.1858
B17-6	B18-6	3/16	1/4	1/2	.375	.032	.1892	.1873	.2503	.2497	.1865	.1858
B17-7	B18-7	1/4	5/16	1/4	.500	.032	.2521	.2498	.3128	.3122	.2490	.2481
B17-8	B18-8	1/4	5/16	3/8	.500	.032	.2521	.2498	.3128	.3122	.2490	.2481
B17-9	B18-9	1/4	5/16	1/2	.500	.032	.2521	.2498	.3128	.3122	.2490	.2481
B17-10	B18-10	5/16	3/8	1/4	.562	.032	.3148	.3125	.3753	.3747	.3115	.3106
B17-11	B18-11	5/16	3/8	3/8	.562	.032	.3148	.3125	.3753	.3747	.3115	.3106
B17-12	B18-12	5/16	3/8	1/2	.562	.032	.3148	.3125	.3753	.3747	.3115	.3106
B17-13	B18-13	5/16	3/8	3/4	.562	.032	.3148	.3125	.3753	.3747	.3115	.3106
B17-14	B18-14	3/8	15/32	1/4	.687	.046	.3773	.3750	.4691	.4684	.3740	.3731
B17-15	B18-15	3/8	15/32	3/8	.687	.046	.3773	.3750	.4691	.4684	.3740	.3731
B17-16	B18-16	3/8	15/32	1/2	.687	.046	.3773	.3750	.4691	.4684	.3740	.3731
B17-17	B18-17	3/8	15/32	3/4	.687	.046	.3773	.3750	.4691	.4684	.3740	.3731
B17-18	B18-18	7/16	17/32	1/2	.750	.046	.4406	.4379	.5316	.5309	.4365	.4355
B17-19	B18-19	1/2	19/32	1/4	.875	.046	.5030	.5003	.5941	.5934	.4990	.4980
B17-20	B18-20	1/2	19/32	3/8	.875	.046	.5030	.5003	.5941	.5934	.4990	.4980
B17-21	B18-21	1/2	19/32	1/2	.875	.046	.5030	.5003	.5941	.5934	.4990	.4980
B17-22	B18-22	1/2	19/32	3/4	.875	.046	.5030	.5003	.5941	.5934	.4990	.4980
B17-23	B18-23	1/2	19/32	1	.875	.046	.5030	.5003	.5941	.5934	.4990	.4980
B19-1	B20-1	1/8	3/16	3/16	.312	.032	.1269	.1251	.1878	.1873	.1243	.1236
B19-2	B20-2	1/8	3/16	3/8	.312	.032	.1269	.1251	.1878	.1873	.1243	.1236
B19-3	B20-3	3/16	1/4	1/4	.375	.032	.1892	.1873	.2503	.2497	.1865	.1858
B19-4	B20-4	3/16	1/4	3/8	.375	.032	.1892	.1873	.2503	.2497	.1865	.1858
B19-5	B20-5	3/16	1/4	1/2	.375	.032	.1892	.1873	.2503	.2497	.1865	.1858
B19-6	B20-6	1/4	5/16	1/4	.500	.032	.2521	.2498	.3128	.3122	.2490	.2481
B19-7	B20-7	1/4	5/16	3/8	.500	.032	.2521	.2498	.3128	.3122	.2490	.2481
B19-8	B20-8	1/4	5/16	1/2	.500	.032	.2521	.2498	.3128	.3122	.2490	.2481
B19-9	B20-9	5/16	3/8	1/4	.562	.032	.3148	.3125	.3753	.3747	.3115	.3106
B19-10	B20-10	5/16	3/8	3/8	.562	.032	.3148	.3125	.3753	.3747	.3115	.3106
B19-11	B20-11	5/16	3/8	1/2	.562	.032	.3148	.3125	.3753	.3747	.3115	.3106
B19-12	B20-12	3/8	15/32	1/4	.687	.046	.3773	.3750	.4691	.4684	.3740	.3731
B19-13	B20-13	3/8	15/32	3/8	.687	.046	.3773	.3750	.4691	.4684	.3740	.3731
B19-14	B20-14	3/8	15/32	1/2	.687	.046	.3773	.3750	.4691	.4684	.3740	.3731
B19-15	B20-15	3/8	15/32	3/4	.687	.046	.3773	.3750	.4691	.4684	.3740	.3731
B19-16	B20-16	7/16	17/32	1/2	.750	.046	.4406	.4379	.5316	.5309	.4365	.4355
B19-17	B20-17	1/2	19/32	3/8	.875	.046	.5030	.5003	.5941	.5934	.4990	.4980
B19-18	B20-18	1/2	19/32	1/2	.875	.046	.5030	.5003	.5941	.5934	.4990	.4980
B19-19	B20-19	1/2	19/32	3/4	.875	.046	.5030	.5003	.5941	.5934	.4990	.4980
B19-20	B20-20	1/2	19/32	1	.875	.046	.5030	.5003	.5941	.5934	.4990	.4980